

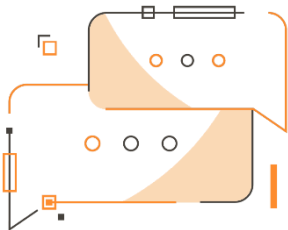


Product Configurator For Manufacturing  
create routings and production BOMs with work centers, run times, and BOM's components in Microsoft Dynamics 365 Business Central

# Product Configurator For Manufacturing

## App for Microsoft Dynamics 365 Business Central

Product Configurator for Manufacturing allows you to create routings and production BOMs with work centers, run times, and BOM's components that vary according to the value of the characteristics in Dynamics 365 Business Central.



Do you want the system to automatically create routings and production BOMs with work centers, run times, and BOM's components that vary according to the value of item characteristics? Do you need to apply conditions at different stages of the routing?

### How it works

Thanks to the app Product Configurator For Manufacturing you can:

- Make the system calculate quantities of use through formulas based on characteristic values.
- Condition the presence of a particular **component** with a value-based condition on characteristics.
- Make the system calculate setup / run times through formulas based on the values of the characteristics.
- Condition the presence of a certain **phase** of the routing with a condition based on the characteristics.

### Quick Guide

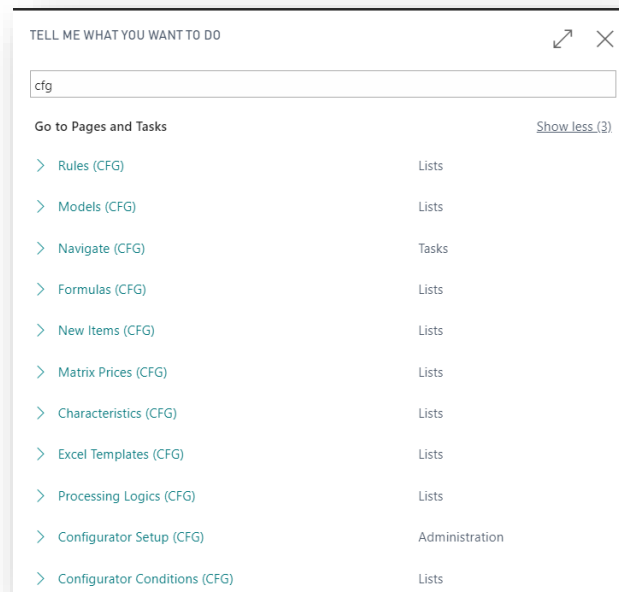
Ready in a few steps:

1. Enter the Setup in the Item card
2. Let the system generate routings and BOMs
3. Link Characteristics and Conditions to the routings



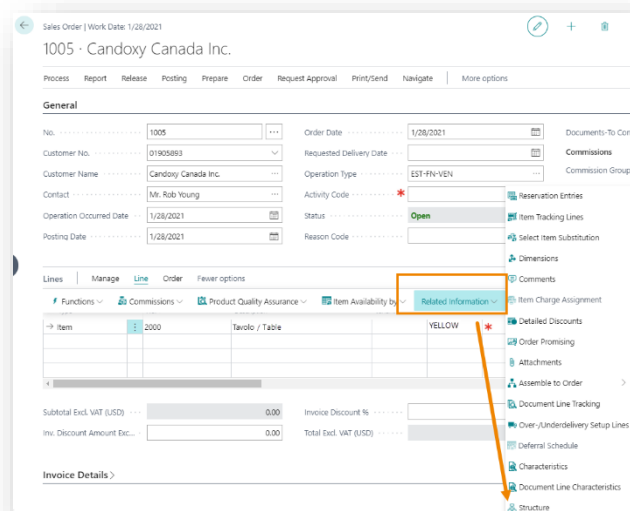
## Product Configurator For Manufacturing - SUMMARY

Press ALT + Q and digit "CFG" for a summary of the features involved:



## Setup Item and Bills of Materials structure

Within the Order, for items that are created by the Configurator, the system generates the BOM. We open it from Line->Related Information-> Structure:

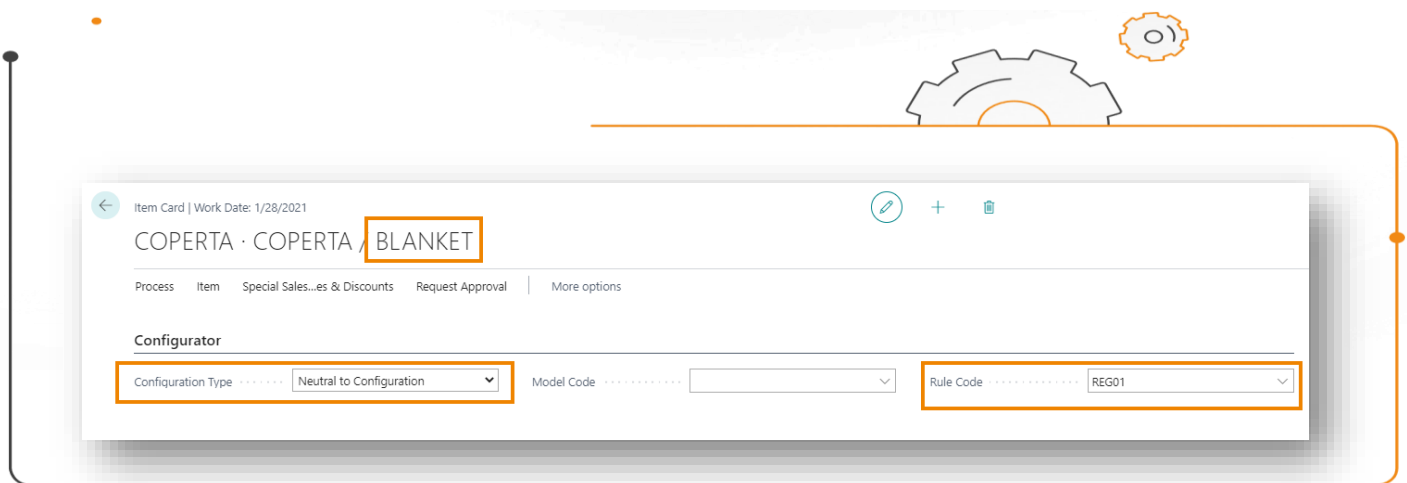




The BOMs you create are **multilevel**.

In order to use the Configurator, it is necessary to start from a "neutral" item and in the item card you need to

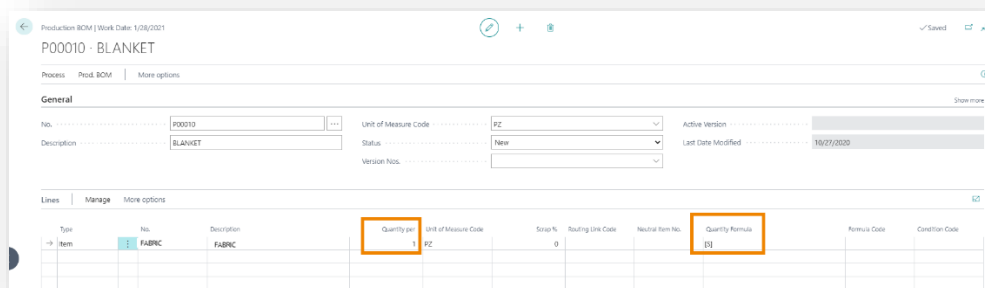
- enable the **Configurator Management** (select "Neutral to Configurator")
- define a Rule Code



In addition, this production item must be associated with a **Routing** that is also considered neutral and a neutral **BOM**.

## Bill of Material

The Bill of Material (BOM) of the neutral item contains a single item (e.g. Fabric) whose quantity will be equal to the characteristic S=surface (square meter)



In the **configured BOM** the system replaced the code (Fabric C 01), the item and the quantity of use (2):

DB PRODUZIONE | DATA DEL LAVORO: 27/01/2022

COPERTA.C.01.00001 · COPERTA / BLANKET COTONE / COTTON, COL. NERO / BLACK, H. 1

Processo DB prod. | Azioni Naviga Meno opzioni

**Generale**

Nr. COPERTA.C.01.00001 Nome ricerca

Descrizione COPERTA / BLANKET COTONE / COTTON, C Nr. versioni

Cod. unità di misura PZ Versione attiva

Stato Certificata Data ultima modifica

**Righe** | Gestione Componente Meno opzioni

Tipo	Nr.	Descrizione	Cod. variante	Quantità per	Cod. miss.
→ Articolo	TESSUTO.C.01	TESSUTO / FABRIC COTONE / COTTON, COL. NERO / BLACK		2	M

## Routing

The example for the neutral item contains three tasks with specific setup and run times. The phases can be linked to **Conditions** or **Characteristics**.

Second and third phase are conditioned to a Condition Code and a Characteristic Code:

Routing | Work Date: 1/28/2021

BLANKET · COPERTA/BLANKET

Copy Routing... Versions Where-used More options

**General**

No. BLANKET Status New Active Version

Description COPERTA/BLANKET Search Description COPERTA/BLANKET Last Date Modified 10/26/2020

Type Serial Version Nos.

**Lines** | Manage More options

Operation No. #	Description	Setup Time	Run Time	Wait Time	Move Time	Fixed Scrap Quantity	Scrap Factor %	Consumed Capacities	Send-Ahead Quantity	Unit Cost per	WIP Item	Characteristic Code	Condition Code
1000	CUT	0.5	1	0	0	0	0	1	0	0.00	<input type="checkbox"/>		
2000	IRONING	0.5	1	0	0	0	0	1	0	0.00	<input type="checkbox"/>		COND01
→ 3000	PACKAGING	1	1	0	0	0	0	1	0	0.00	<input type="checkbox"/>	TESSUTO	

Lines | Work Date: 1/28/2021 **Condition code** ✓ Saved

Search + New Edit List Delete Charac. Value Open in Excel

Condition Code ↑	Line No. ↑	Type	Characteristic Code	Characteristic Description	Filter Text
→ COND01	10000	Equal	TESSUTO	TESSUTO/fABRIC	C L

Characteristic Values | Work Date: 1/28/2021 **Characteristic code** ✓ Saved

Search + New Edit List Delete Translations Optional Item Spec. ...

Code ↑	Neutral Item No.	Characteristic Code ↑ ▼	Enable Routing	Source Type	Source No.	Run Time Factor	Standard Code
C		TESSUTO	<input checked="" type="checkbox"/>	Work Center	CONF01	1	
L		TESSUTO	<input checked="" type="checkbox"/>	Work Center	CONF02	2	
→ P	:	TESSUTO	<input checked="" type="checkbox"/>	Work Center	CONF03	5	

The phases can also be linked to a **Processing Logic Code**, which binds Characteristic Code and Condition Code allowing you not to have too many lines within the neutral article.

Processing Logic | Work Date: 1/28/2021 **IRONING** ✓ Saved

**General**

Code ..... IRONING Short Description .....

Description ..... IRONING

**Lines** | Manage

Sequence ↑	Condition Code	Source Type	Source No.	Standard Task Code	Coefficient (Run Time)	Formula Code (Run Time)	Coefficient (Setup Time)
→ 10	COND01	Work Center	100		2	FOR01	1
20		Work Center			1		

Code ↑ Description

→ FOR01 AREA CALC FORMULA

+ New Select from full list

## Subscription

Some features of the Product Configurator For Manufacturing app require a subscription.

The subscription can be activated from Subscription control panel or directly from the notification messages that the system proposes, by clicking on the link that allows you to start the subscription wizard

Contact us for more info:

[www.eos-solutions.it/en/contact-support.html](http://www.eos-solutions.it/en/contact-support.html)



[www.eos-solutions.it](http://www.eos-solutions.it)